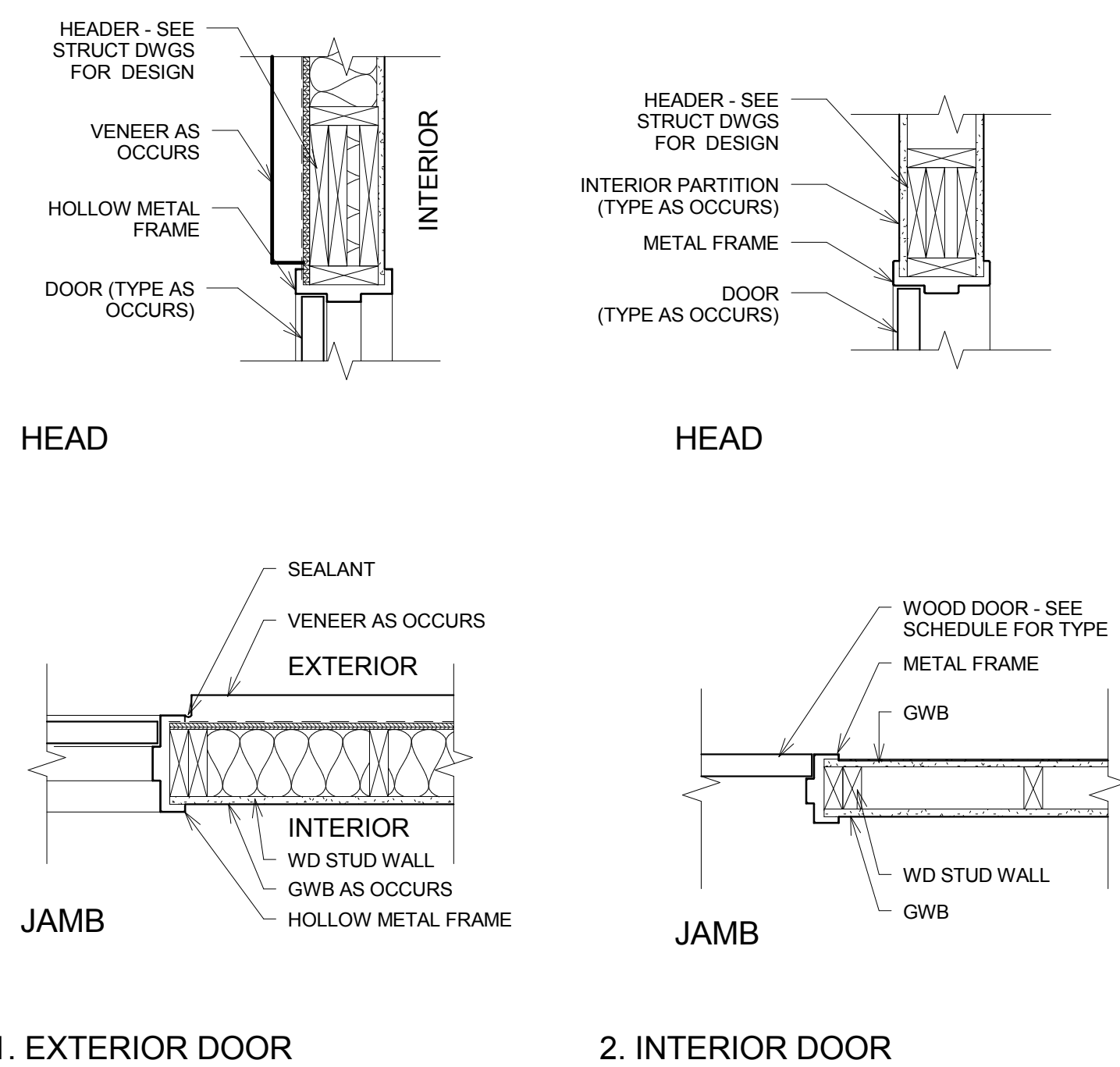
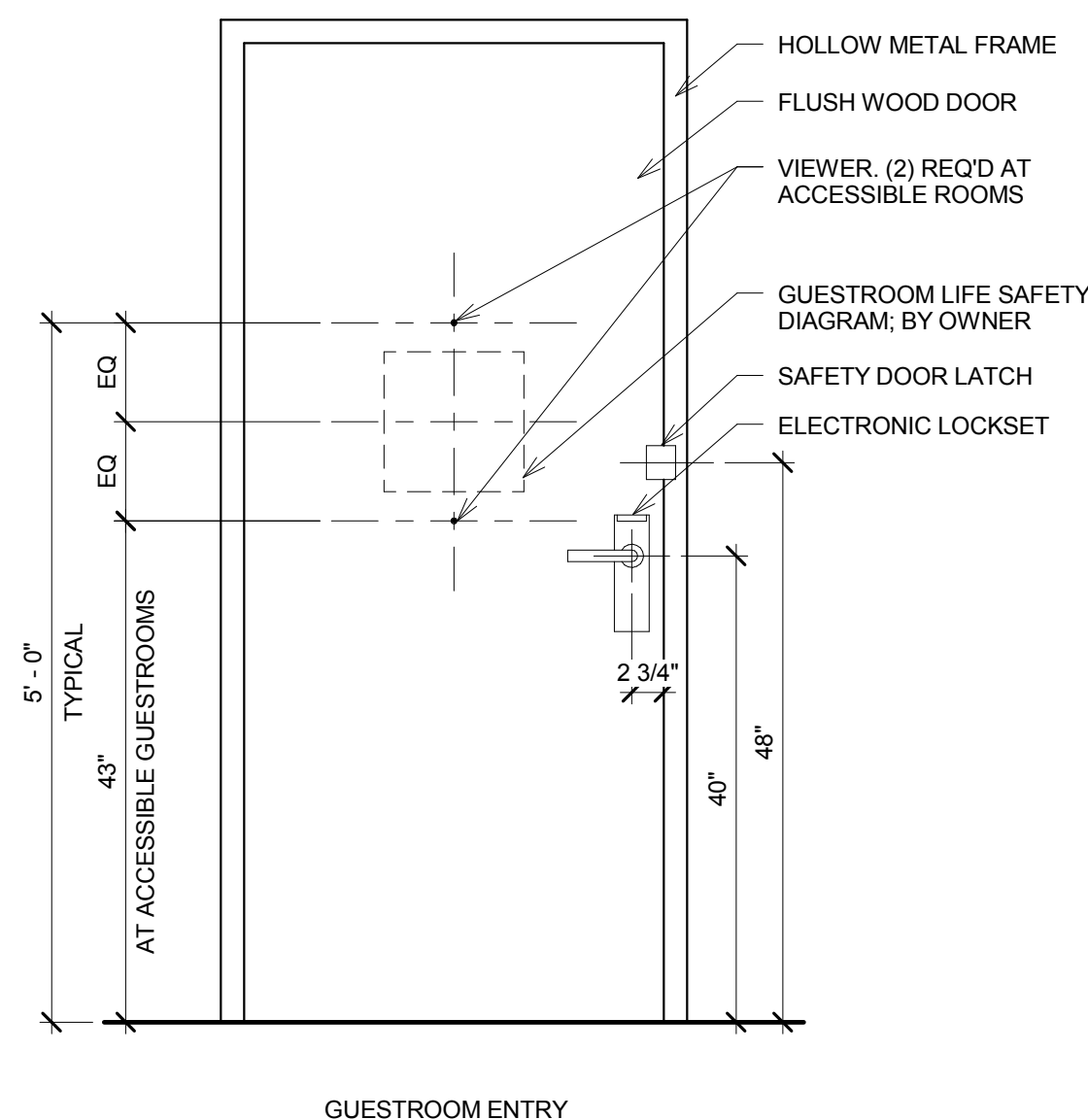


Door Details



Guestroom Door Elevation



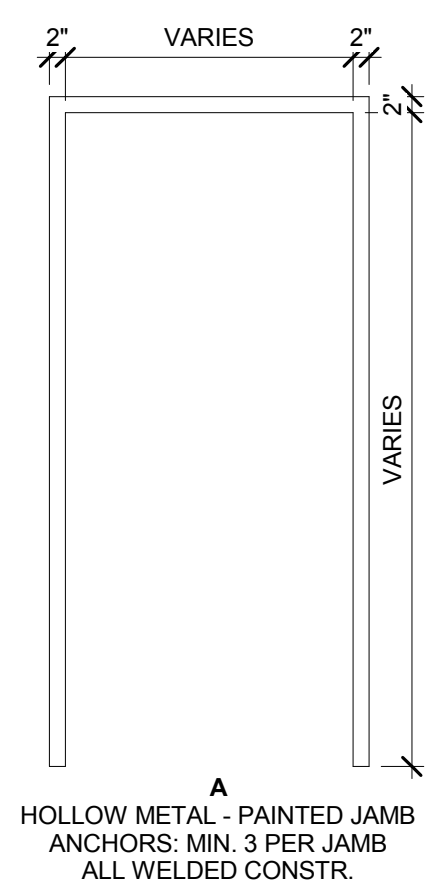
Door Hardware Schedule

SET #1		SET #17
3 HINGES		3 HINGES
1 CARD READER		1 DOOR CLOSER
1 DOOR GUARD		1 DOOR STOP
1 TAMPER-PROOF 1-WAY VIEWER W/ COVER		
1 DOOR GASKETING		SET #18
1 THRESHOLD		3 HINGES
1 WALL STOP		1 DOOR CLOSER
1 DOOR CLOSER		1 DOOR GASKETING
1 DOOR SWEEP		1 WALL STOP
SET #2		SET #19
2 RECESSED PULLS		3 HINGES
- BARN DOOR SLIDING RAIL HARDWARE		1 LOCK SET
		1 DOOR CLOSER
SET #3		1 DOOR GASKETING
3 HINGES		1 KICK PLATE
1 LOCKSET		1 WALL STOP
SET #4		SET #20
2 SPRING HINGES		4 HINGES
1 HINGE		1 STOREROOM LOCK
1 CONNECTING LATCH		1 DOOR CLOSER
1 DEADBOLT		2 ARMOR PLATES
1 DOOR GUARD		1 DOOR GASKETING
1 DOOR GASKETING		1 DOOR STOP
1 THRESHOLD		
1 DOOR SWEEP		SET #21
		3 HINGES
SET #5		1 PRIVACY SET
1 REMOTE CARD READER		1 DOOR STOP
1 INTERCOM AT VESTIBULE DOOR		
BALANCE OF HARDWARE BY DOOR MFR		SET #22
		6 HINGES
SET #6		1 STOREROOM LOCK
ALL HARDWARE BY DOOR MFR		1 DOOR GASKETING
SET #7		SET #23
1 REMOTE CARD READER		3 HINGES
BALANCE OF HARDWARE BY DOOR MFR		1 EXIT DEVICE
		1 DOOR CLOSER
SET #8		1 THRESHOLD
3 HINGES		1 DOOR SWEEP
1 DOOR CLOSER		1 WEATHERSTRIPPING
1 DOOR GASKETING		1 RAIN DRIP CAP
1 THRESHOLD		1 FLOOR STOP
1 WALL STOP		
		SET #24
SET #9		3 HINGES
3 HINGES		1 EXIT DEVICE
1 LOCKSET		1 DOOR CLOSER
1 DOOR CLOSER		1 THRESHOLD
1 DOOR STOP		1 DOOR SWEEP
		1 WEATHERSTRIPPING
SET #10		1 RAIN DRIP CAP
3 HINGES		1 FLOOR STOP
1 LOCKSET		1 KICKPLATE
1 WALL STOP		
		SET #25
SET #11		3 HINGES
3 HINGES		1 DOOR CLOSER
1 KEYPAD LOCK		1 DOOR GASKETING
1 DOOR CLOSER		1 WALL STOP
1 DOOR VIEWER		
1 WALL STOP		SET #26
		3 HINGES
SET #12		1 CARD READER
3 HINGES		1 DOOR CLOSER
1 PRIVACY SET		1 DOOR GASKETING
1 KICK PLATE		1 WALL STOP
1 DOOR CLOSER		
1 DOOR STOP		SET #27
2 COAT HOOK (H/L,C)		3 EXTENDED HINGES
		1 EXIT DEVICE
SET #13		1 LOCK SET
3 HINGES		1 DOOR CLOSER
1 OFFLINE LOCK		1 MAGNETIC HOLD-OPEN
1 WALL STOP		1 DOOR STOP
SET #14		SET #28
3 HINGES		3 EXTENDED HINGES
1 CARD READER		1 LOCK SET
1 LOCK SET		1 DOOR STOP
1 DOOR CLOSER		
1 DOOR STOP		SET #29
		2 ACCESSIBLE PULLS
SET #15		- BARN DOOR SLIDING RAIL HARDWARE
3 HINGES		
1 LOCK SET		
1 DOOR CLOSER		
1 THRESHOLD		
1 SOUND SEAL		
1 RAIN DRIP CAP		
SET #16		NOTES
3 HINGES		1. ALL RATED DOORS TO BE SELF CLOSING.
1 CARD READER		
1 LOCK SET		2. ALUMINUM DOORS AND STOREFRONT FRAMES TO BE FACTORY PAINTED.
1 DOOR CLOSER		
1 DOOR GASKETING		3. ALL DOORS IN POOL AREA TO HAVE MARINE GRADE FINISH.
1 KICK PLATE		
1 WALL STOP		
1 CYLINDER		
1 DOOR VIEWER		

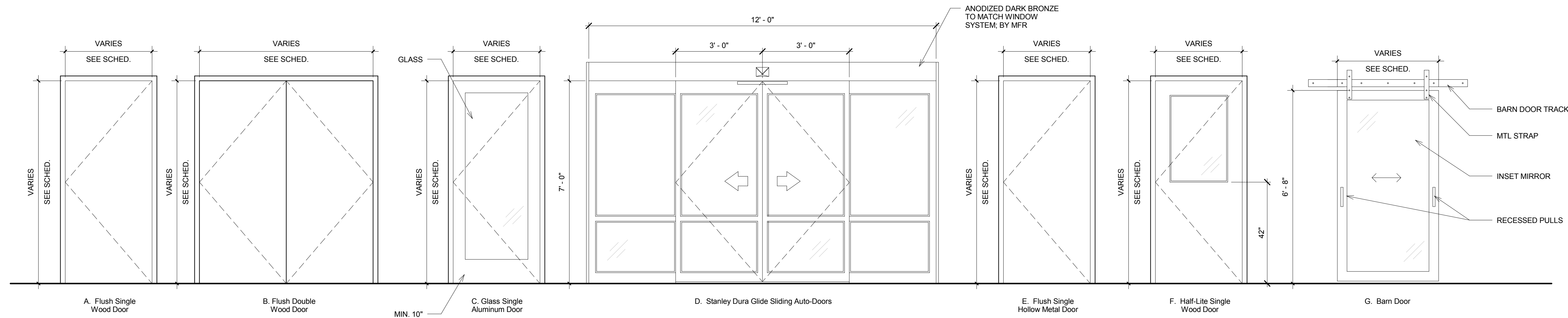
Door Schedule										
Mark	Location	Door Type	Door Panel			Frame		Hardware Set	Fire Rating	Comments
			Width	Height	Material	Finish	Type			
1st Floor										
001	VESTIBULE	D	3'-0"	7'-0"	ALUM	PREFIN	-	ALUM	6	-
002	ELECTRICAL EXIT	E	3'-0"	7'-0"	HM	PTD	A	GALV. HM	23	-
003	STAIR A EXIT	E	3'-0"	7'-0"	ALUM	PTD	A	GALV. HM	24	-
004	POOL EXIT	C	3'-0"	7'-0"	ALUM	PREFIN	-	ALUM	7	Clear, tempered, insulated glass
005	CORRIDOR EXIT	C	3'-0"	7'-0"	ALUM	PREFIN	-	ALUM	7	Clear, tempered, insulated glass
006	STAIR B EXIT	E	3'-0"	7'-0"	HM	PTD	A	GALV. HM	24	-
100A	LOBBY	D	3'-0"	7'-0"	ALUM	PREFIN	-	ALUM	5	-
100D	CORRIDOR VESTIBULE	C	3'-0"	7'-0"	ALUM	PREFIN	-	ALUM	6	-
100E	POOL VESTIBULE	C	3'-0"	7'-0"	ALUM	PREFIN	-	ALUM	7	-
101	POOL	C	3'-0"	7'-0"	ALUM	PREFIN	-	ALUM	6	-
101A	POOL RESTROOM	E	3'-0"	6'-8"	HM	PTD	A	HM	12	-
101B	POOL MECH.	E	3'-0"	6'-8"	SC WD	PTD	A	HM	20	-
102	MECH.	A	3'-0"	6'-8"	SC WD	PTD	A	HM	9	45 min.
103	FITNESS ROOM	C	3'-0"	7'-0"	ALUM	PREFIN	-	ALUM	8	-
104	WATER HEATER	A	3'-0"	6'-8"	SC WD	PTD	A	HM	9	45 min.
105	BREAK ROOM	A	3'-0"	6'-8"	SC WD	PTD	A	HM	17	45 min.
105A	BOH RESTROOM	A	3'-0"	6'-8"	SC WD	PTD	A	HM	21	45 min.
105B	MECH.	A	3'-0"	6'-8"	SC WD	PTD	A	HM	10	-
105C	DRYERS	A	3'-0"	6'-8"	SC WD	PTD	A	HM	10	45 min.
106	STORAGE	A	3'-0"	6'-8"	SC WD	PTD	A	HM	9	45 min.
107	ELECTRICAL	A	3'-0"	6'-8"	SC WD	PTD	A	HM	9	-
108	LAUNDRY	A	3'-0"	6'-8"	SC WD	PTD	A	HM	20	45 min.
108A	LINEN	A	3'-0"	6'-8"	SC WD	PTD	A	HM	28	-
109	PBX	A	3'-0"	6'-8"	SC WD	PTD	A	HM	14	-
110	SALES	A	3'-0"	6'-8"	SC WD	PTD	A	HM	9	24" x 36" Louver
111	MANAGER	A	3'-0"	6'-8"	SC WD	PTD	A	HM	13	-
112	MECH.	A	3'-0"	6'-8"	SC WD	PTD	A	HM	9	45 min.
113	STORAGE	A	3'-0"	6'-8"	SC WD	PTD	A	HM	10	-
114	OFFICE ACCESS	A	3'-0"	6'-8"	SC WD	STN	A	HM	11	45 min.
115	WORK AREA	A	3'-0"	6'-8"	SC WD	STN	A	HM	11	45 min.
118	STORAGE	A	3'-0"	6'-8"	SC WD	STN	A	HM	9	-
119	MENS RESTROOM	A	3'-0"	6'-8"	SC WD	STN	A	HM	12	-
120	WOMENS RESTROOM	A	3'-0"	6'-8"	SC WD	STN	A	HM	12	-
121	MECH.	A	3'-0"	6'-8"	SC WD	STN	A	HM	9	-
123	MEETING ROOM	A	3'-0"	6'-8"	SC WD	STN	A	HM	16	45 min.
123A	STORAGE	A	3'-0"	6'-8"	SC WD	STN	A	HM	9	45 min.
124	PANTRY	A	3'-0"	6'-8"	SC WD	PTD	A	HM	27	45 min.
125	MEETING ROOM	A	3'-0"	6'-8"	SC WD	STN	A	HM	16	45 min.
125A	STORAGE	A	3'-0"	6'-8"	SC WD	STN	A	HM	9	45 min.
126	FOOD PREP.	A	3'-0"	6'-8"	SC WD	PTD	A	HM	9	45 min.
126A	FOOD PREP. STORAGE	26A	3'-0"	6'-8"	SC WD	PTD	A	HM	10	-
127	MECH.	A	3'-0"	6'-8"	SC WD	PTD	A	HM	9	45 min.
134	WEST LAUNDRY	F	3'-0"	6'-8"	SC WD	PTD	A	HM	26	45 min.
134A	STORAGE	A	3'-0"	6'-8"	SC WD	PTD	A	HM	10	-
EL-01A	MECH.	A	3'-0"	6'-8"	SC WD	STN	A	HM	10	-
ST-A01	STAIR A	HM	3'-0"	6'-8"	HM	PTD	A	HM	25	90 min.
ST-B01	STAIR B	A	3'-0"	6'-8"	HM	PTD	A	HM	25	90 min.
2nd Floor										
201	STORAGE	A	3'-0"	6'-8"	SC WD	PTD	A	HM	19	45 min.
213A	CHUTE	A	3'-0"	6'-8"	SC WD	PTD	A	HM	19	-
227	STORAGE	A	3'-0"	6'-8"	SC WD	PTD	A	HM	19	45 min.
ST-A02	STAIR A	E	3'-0"	6'-8"	HM	PTD	A	HM	25	90 min.
ST-B02	STAIR B	E	3'-0"	6'-8"	HM	PTD	A	HM	25	90 min.
3rd Floor										
301	STORAGE	A	3'-0"	6'-8"	SC WD	PTD	A	HM	19	45 min.
313A	CHUTE	A	3'-0"	6'-8"	SC WD	PTD	A	HM	19	-
330	STORAGE	A	3'-0"	6'-8"	SC WD	PTD	A	HM	19	45 min.
ST-A03	STAIR A	E	3'-0"	6'-8"	HM	PTD	A	HM	25	90 min.
ST-B03	STAIR B	E	3'-0"	6'-8"	HM	PTD	A	HM	25	90 min.
4th Floor										
401	STORAGE	A	3'-0"	6'-8"	SC WD	PTD	A	HM	19	45 min.
413A	CHUTE	A	3'-0"	6'-8"	SC WD	PTD	A	HM	19	-
430	STORAGE	A	3'-0"	6'-8"	SC WD	PTD	A	HM	19	45 min.
ST-A04	ELEVATOR PANEL CLOSET	B	3'-0"	7'-0"	SC WD	PTD	A	HM	22	-
ST-A04	STAIR A	E	3'-0"	6'-8"	HM	PTD	A	HM	25	90 min.
ST-B04	STAIR B	E	3'-0"	6'-8"	HM	PTD	A	HM	25	90 min.

Guestroom Door Schedule												
Mark	Location	Door Panel					Frame		Hardware Set	Fire Rating	Comments	
		Door Type	Width	Height	Material	Finish	Type	Material				
GR-1	GUESTROOM ENTRY	A	3' - 0"	6' - 8"	SC WD	STN	A	HM	1	45 min.		
GR-3	GUESTROOM CONNECTING	A	3' - 0"	6' - 8"	SC WD	PTD	A	HM	4	45 min.		

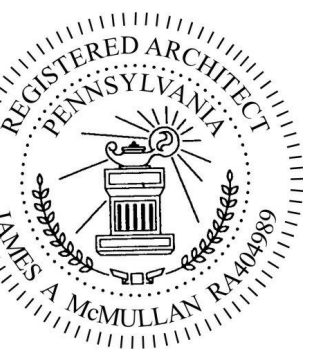
Frame Types



Door Types



1273 Washington Pike, Bridgeville, PA 15017
t. 412.257.9010



ISSUE

Issued for Permit
08.05.2016

PROJECT: 16-018

Hampton Inn & Suites

New Stanton, PA 15672

OWNER

Stanton Hospitality LLC

52 Blueberry Lane,
Grove City, PA 16127

THESE DRAWINGS ARE FOR REVIEW OF DESIGN AND CONCEPT DESCRIPTION ONLY. NO REPRESENTATION IS MADE TO THE ACCURACY OF THE DRAWINGS WITH RESPECT TO EXISTING DIMENSIONS OR CONDITIONS. ALL CONSULTANTS AND CONTRACTORS MUST VERIFY ANY AND ALL DIMENSIONS AND CONDITIONS WHICH ARE CRITICAL TO THEIR WORK. THESE DRAWINGS ARE INSTRUMENTS OF SERVICE AND ARE THE INTELLECTUAL PROPERTY OF JUMAC ARCHITECTS. ANY UNAUTHORIZED USE OR REPRODUCTION IS PROHIBITED.

[illegible]

Door Schedule and Details

As indicated

A-901